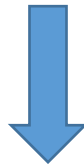


NetApp Certification NS0-502 Exam



- **Vendor: Network Appliance**
- **Exam Code: NS0-502**
- **Exam Name: NetApp Certified Implementation Engineer - SAN, Data
ONTAP 7-Mode**

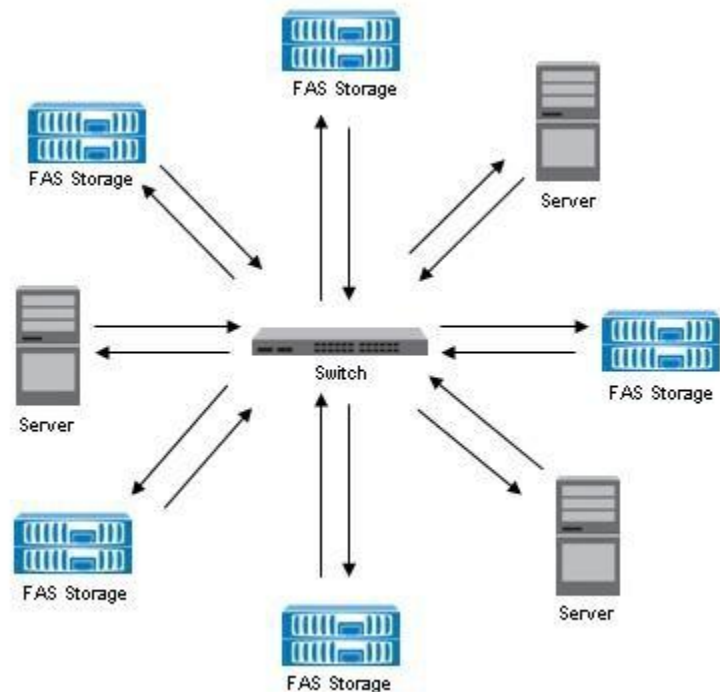
Get Complete Version Exam NS0-502 Dumps with VCE and PDF Here



<https://www.passleader.com/ns0-502.html>

QUESTION 1

Referring to the exhibit. Given the information provided in the diagram, what is the appropriate FC topology?



- A. point-to-point
- B. switched fabric
- C. arbitrated loop
- D. ring

Answer: B

QUESTION 2

Which FC SAN topology provides the best performance and scalability?

- A. cascade
- B. core-edge
- C. full mesh
- D. partial mesh

Answer: B

QUESTION 3

A 200-GB LUN is created in an empty 500-GB volume with the volume guarantee option set to Volume. LUN reservation is enabled and the fractional reserve is set to 100 and scheduled snapshots are disabled. Directly after LUN creation, what is the maximum free space available in the volume?

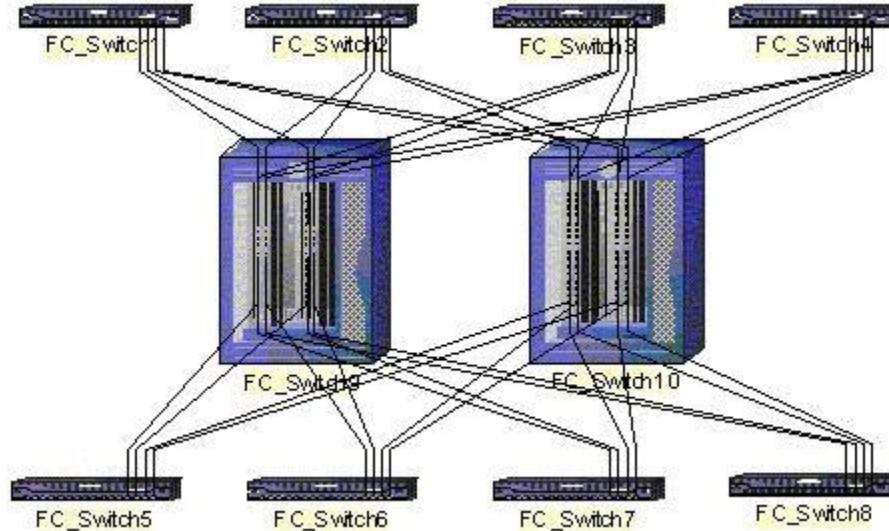
- A. 200 GB
- B. 300 GB

- C. 400 GB
- D. 500 GB

Answer: B

QUESTION 4

Referring to the exhibit. Based on the diagram shown, what is the appropriate FC switch topology?

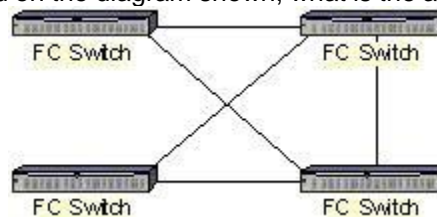


- A. full mesh
- B. core-edge
- C. full cascade
- D. partial mesh

Answer: B

QUESTION 5

Referring to the exhibit. Based on the diagram shown, what is the appropriate FC switch topology?



- A. core-edge
- B. full mesh
- C. partial mesh
- D. partial cascade

Answer: C

QUESTION 6

A 100-GB thinly provisioned LUN is allocated to a Windows host. 100 GB of data is written into the LUN. The current capacity utilization on the disk array as well as the host is 100%. 50 GB of data

is deleted from the LUN. Space reclaimer has NOT been run. What is the current capacity utilization on both the host and the disk array?

- A. 50% on the host, 100% on the disk array
- B. 100% on the host, 50% on the disk array
- C. 50% on the host, 50% on the disk array
- D. 100% on the host, 100% on the disk array

Answer: A

QUESTION 7

A customer has a four-node SUN cluster configuration. Each node has two, dual-ported HBAs. What is the minimum number of igroups that need to be created to map a LUN to the cluster?

- A. 1
- B. 2
- C. 4
- D. 8

Answer: A

QUESTION 8

A company has FC patch panels in their data center. They plan on using them to interconnect their storage controllers to the FC switches and the hosts using the storage. They have 62.5 micron cable between the patch panels. Which cable should you use on the NetApp storage controller's Target Ports to make this a supported configuration?

- A. long wave SFPs, 62.5 micron FC cable
- B. short wave SFPs, 50 micron FC cable
- C. short wave SFPs, 62.5 micron FC cable
- D. long wave SFPs, 50 micron FC cable

Answer: C

QUESTION 9

NetApp supports multiple FC paths from the host to the NetApp storage controllers. In addition to using multiple FC switches, which other NetApp supported components should you use for this type of configuration?

- A. multipathing host software, multiple storage controllers with multiple target ports each
- B. HBA with driver and firmware, multiple storage controllers with multiple target ports each
- C. HBA with driver and firmware, multipathing host software, multiple storage controllers with multiple initiator ports each
- D. HBA with driver and firmware, multipathing host software, multiple storage controllers with multiple target ports each

Answer: D

QUESTION 10

A company has an assortment of operating systems in their environment. Which operating system is NOT currently supported by NetApp for their FC solutions?

- A. Windows 2008 Server
- B. Solaris 10
- C. Windows NT
- D. IBM AIX

Answer: C

QUESTION 11

What would you use to share a data LUN among multiple servers where each server has simultaneous write access?

- A. host-based BootBIOS
- B. host-based multipathing
- C. host-based volume manager
- D. host-based clustered file system

Answer: D

QUESTION 12

What should you do to verify FC connectivity between the host and the FC switch?

- A. ping the FC switch Ethernet port from the host
- B. check the FC switch for light on the FC port
- C. check the FC switch for the WWPN of the host HBA
- D. check the FC switch for the port type of the host port

Answer: C

QUESTION 13

What is the appropriate method for testing high availability controller failover?

- A. pull a power cord from a power supply on a controller
- B. shut down a controller
- C. issue the takeover command from a controller
- D. issue the giveback command from a controller

Answer: C

QUESTION 14

What should you do to test NetApp storage controller failover in a high availability FC environment?

- A. shut down the FC switch in the fabric that the storage controller is attached to
- B. shut down FC ports on the FC switch that the storage controller is attached to
- C. pull FC cables connecting the storage controller to the FC switch
- D. issue the takeover command on either storage controller

Answer: D

QUESTION 15

Which three statements are true about Asymmetric Logical Unit Access (ALUA)? (Choose three.)

- A. It is a set of SCSI commands for discovering and managing multiple paths to LUNs on Fibre Channel and iSCSI SANs.
- B. It requires Array Support Library (ASL), a proprietary vendor library.
- C. It allows the initiator to query the target about path attributes, such as primary path and secondary path.
- D. It no longer requires proprietary SCSI commands.
- E. It works in standby and single_image cfmodes.

Answer: ACD

QUESTION 16

for which four operations would you use igroup throttles on a NetApp storage solution? (Choose four.)

- A. to assign a specific percentage of the queue resources on each physical port to the igroup
- B. to manage pathing to the LUNs
- C. to reserve a minimum percentage of queue resources for a specific igroup
- D. to limit the number of concurrent I/O requests an initiator can send to the storage system
- E. to restrict an igroup to a maximum percentage of use
- F. to manage space reclamation

Answer: ACDE

QUESTION 17

A company is planning to use physical Raw Device Mappings (RDMs) in their ESX environment. Which LUN type should they use on the NetApp storage system if they want to prevent LUN I/O alignment issues?

- A. They should use the VMware LUN type.
- B. They should use the LUN type matching the guest operating system.
- C. ESX will automatically align I/O on WAFL boundaries if NetApp host utilities is installed.
- D. Any UNIX LUN type will work since it is an RDM.

Answer: B

QUESTION 18

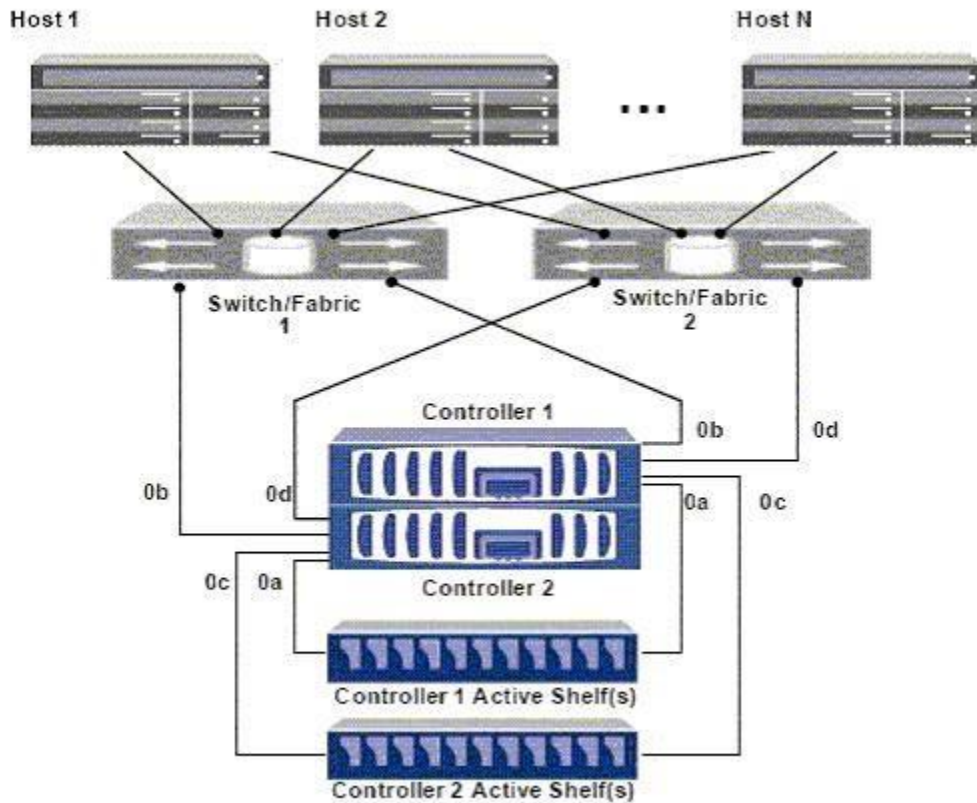
What is the functionality of the latest Data ONTAP DSM for Windows?

- A. It can handle FCP and iSCSI paths to the same LUN.
- B. It allows you to take snapshots for both FCP and iSCSI LUNS.
- C. It allows you to enable ALUA on the igroup from the host.
- D. It allows you to create new LUNs from the host.

Answer: A

QUESTION 19

Referring to the exhibit. In the diagram shown, a portset is created on controller 1 with the command: controller1>portset create -f ntapportset controller1:0b. This portset is bound to the igroup with all the initiators in it. How many paths can the host 1 see to a LUN on controller 1?



- A. six paths
- B. four paths
- C. three paths
- D. one path

Answer: D

QUESTION 20

When assessing a current storage solution, it is critical to document the current NetApp storage system configuration. Which factor should NOT be considered when documenting this existing configuration?

- A. Data ONTAP version
- B. current data layout (RAID groups, aggregates, volumes, etc.)
- C. storage system name and IP
- D. host power cables and power usage

Answer: D

QUESTION 21

Which command do you use on a Brocade switch to view all defined zone configuration information?

- A. cfgActvShow
- B. show zone

- C. cfgshow
- D. switchshow

Answer: C

QUESTION 22

Which command do you use on a Cisco switch to view the currently active zoneset?

- A. show zone analysis
- B. show zoneset active
- C. show running-config
- D. show config active

Answer: B

QUESTION 23

When building your implementation plan, providing dual power for all systems is critical. Which three actions should be mandated? (Choose three.)

- A. Dual power supplies should be placed in all equipment.
- B. Dual power feeds should be run to all equipment.
- C. Power feeds should be connected to the closest available outlet inside the cabinet.
- D. Power feeds should be connected to separate circuits on the same data center PDU.
- E. Power feeds should be connected to separate outlets connected to two separate PDUs.

Answer: ABE

QUESTION 24

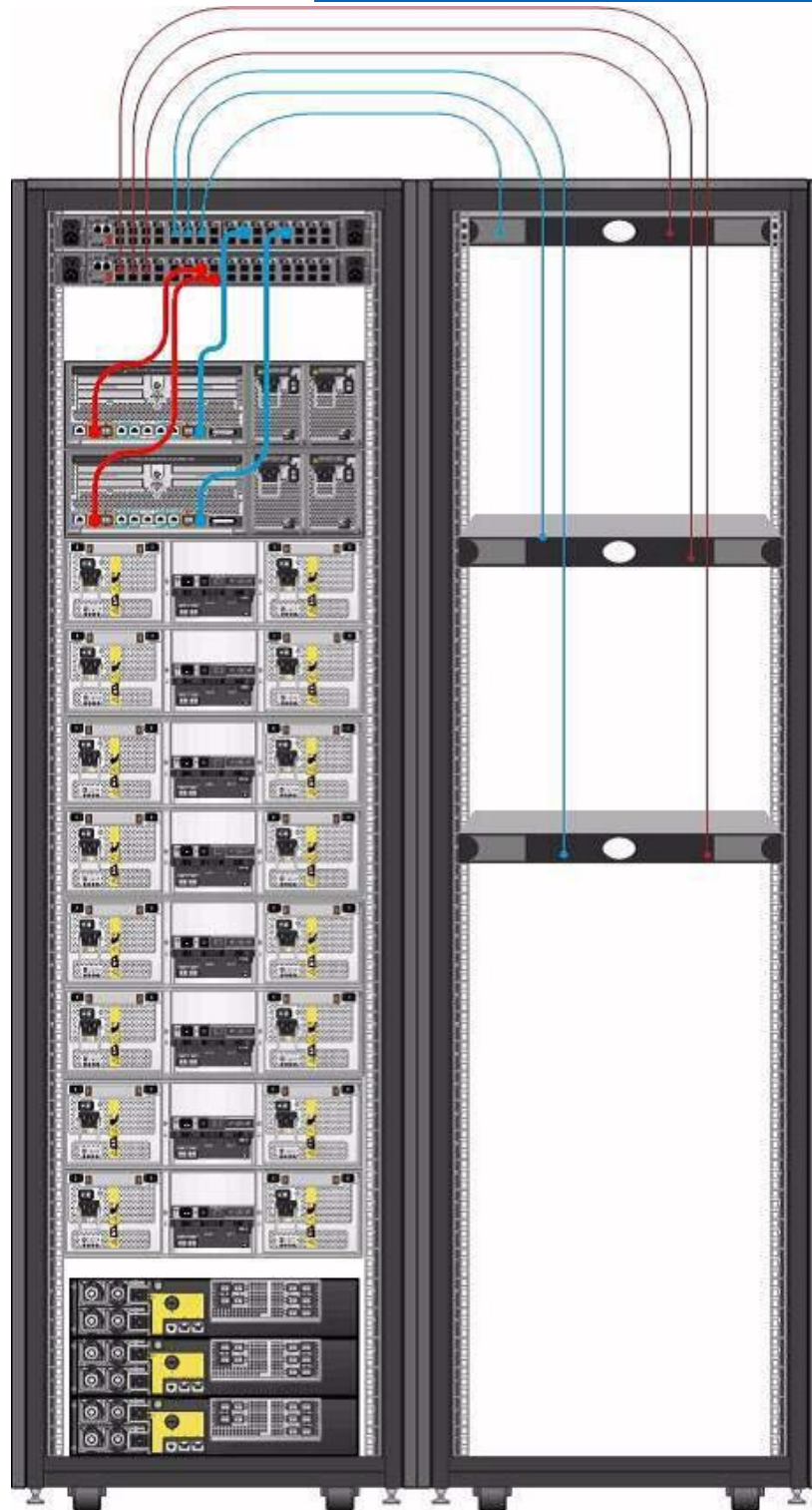
What information needs to be included in a cabinet diagram? (Choose three.)

- A. NetApp storage system login information
- B. physical location of the rack in the data center
- C. storage controller configuration information
- D. rack identifying information
- E. location in the rack of NetApp storage controllers and storage shelves

Answer: BDE

QUESTION 25

Referring to the exhibit. In the cabinet diagram shown, what additional information should be included to make it more complete?



- A. switch connectivity
- B. storage port connectivity
- C. storage shelf connectivity
- D. storage controller rack placement

Answer: C

QUESTION 26

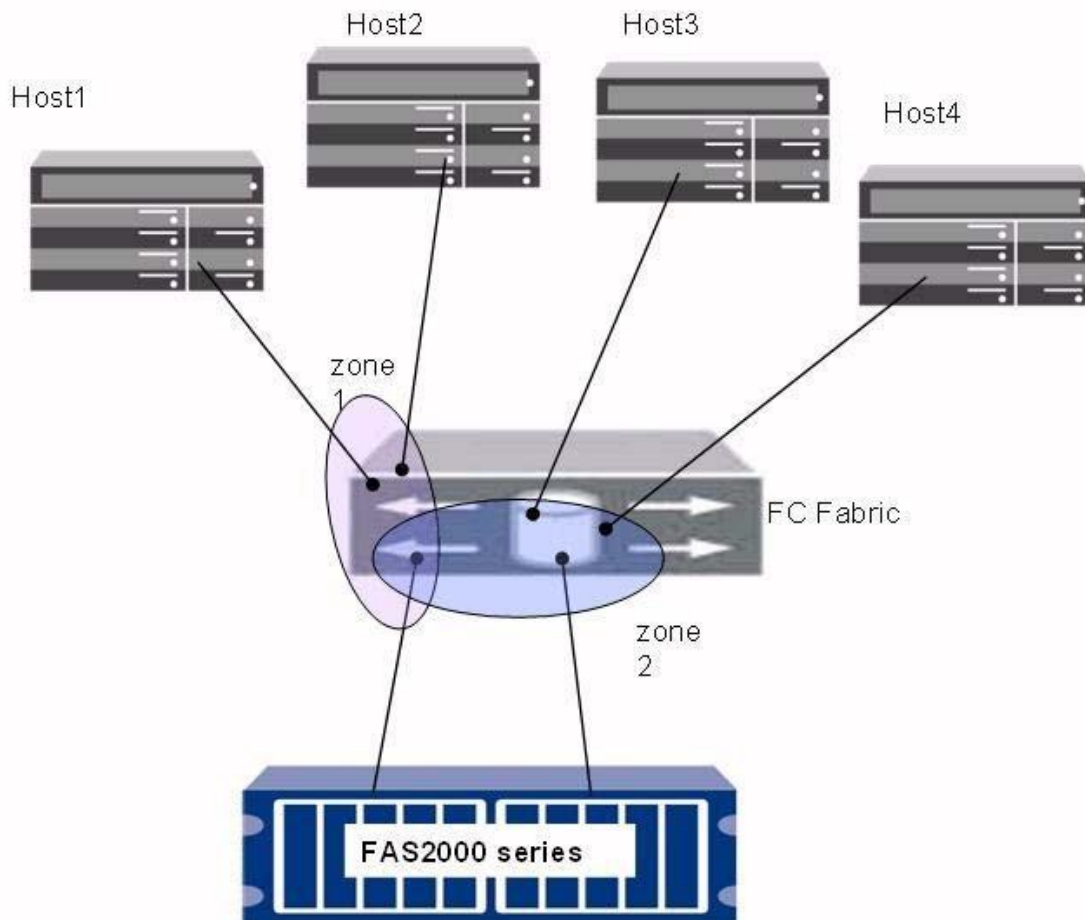
What is NetApp's recommended best practice for zone configuration?

- A. All zones should contain a single initiator and all the targets that initiator accesses.
- B. Individual zones can get too complicated. It is better to simply configure one default zone with all devices contained in it.
- C. All devices from the same vendor should be in one zone.
- D. All zones should contain a single target and all the initiators using that target.

Answer: A

QUESTION 27

Referring to the exhibit. In the diagram shown, how should the zoning configuration be changed to better comply with NetApp best practices?



- A. four zones, each with one initiator, first two with the first target port and the second two with the second target port
- B. two zones, each with two initiators and one target port
- C. two zones, each with all four initiators and one target port
- D. four zones, each with one initiator and both target ports

Answer: D

QUESTION 28

Which type of zoning does NetApp recommend?

- A. World Wide Name zoning
- B. World Wide Port Name zoning
- C. World Wide Node Name zoning
- D. Switch World Wide Name zoning

Answer: B

QUESTION 29

What does NetApp recommend as best practice for zone configuration?

- A. single target zoning
- B. single initiator zoning
- C. multiple initiator zoning
- D. single port zoning

Answer: B

QUESTION 30

Referring to the exhibit. Given the information shown in the diagram, which port has a NetApp device attached to it?

```
port 0:id N2 No_Light
port 1:id N2 Online   f-Port 10:00:00:00:c9:37:85:ab
port 2:id N2 No_Light
port 3:id N2 Online   f-Port 10:00:00:00:c9:00:a0:98
port 4:id N2 Online   f-Port 50:00:a0:98:ff:40:a0:98
port 5:id N2 Online   f-Port 10:0a:09:80:c9:50:52:8c
port 6:id N2 Online   f-Port 20:a0:98:00:c9:42:7b:29
port 7:id N2 Online   f-Port 50:0a:09:81:83:e1:52:d9
```

The NetApp OUI is 00:A0:98

- A. port 3
- B. port 5
- C. port 6
- D. port 7

Answer: D

QUESTION 31

In a NetApp SAN solution, which value should you set for snap reserve for a volume holding LUNs?

- A. 100%
- B. 50%
- C. 20%

D. 0%

Answer: D

QUESTION 32

Which command do you use to see the rate of change between two successive Snapshot copies in a flexible volume in Data ONTAP?

- A. snap diff
- B. snap calculate
- C. snap delta
- D. snap space

Answer: C

QUESTION 33

Which statement is true about single_image cfmode?

- A. Both nodes in the active-active configuration function as separate Fibre Channel nodes, and the LUN maps are not shared between the partners.
- B. Both nodes in the active-active configuration function as a single Fibre Channel node, and the LUN maps are shared between the partners.
- C. Both nodes in the active-active configuration function as a single Fibre Channel node, and the LUN maps are not shared between the partners.
- D. Both nodes in the active-active configuration function as separate Fibre Channel nodes, and the LUN maps are shared between the partners.

Answer: B

QUESTION 34

What are two functions provided by the NetApp Host Utilities Kits? (Choose two.)

- A. They provide the ability to take snapshots of local file systems.
- B. They provide properly set disk and HBA timeout values.
- C. They identify and set path priorities for NetApp LUNs.
- D. They provide SnapMirror/SnapVault integration.ns.

Answer: BC

QUESTION 35

Referring to the exhibit. When should you define the space management policy that is shown in the table?

Guarantee	= volume
LUN Reservation	= off
Fractional_reserve	= 0%
Snap_reserve	= 0%
Auto_delete	= volume
Auto_grow	= on
Try_first	= autogrow

- A. when you want to thin provision the LUNs and make the volume size less than the LUN size
- B. when you want Data ONTAP to start deleting Snapshots to recover space from the volume before growing the volume
- C. when you want to set aside overwrite reserve space for the LUNs so that writes never fail with the presence of Snapshots
- D. when you want to guarantee space for Snapshots by letting the volume autogrow

Answer: A

QUESTION 36

Which three tasks should be completed as part of the site preparation for install? (Choose three.)

- A. plan zoning configuration
- B. verify equipment move path
- C. determine aggregate layout
- D. verify power drops in the equipment location
- E. make contact with data center personnel

Answer: BDE

QUESTION 37

Which task is part of the site preparation for installation?

- A. configure zoning
- B. install equipment in rack
- C. verify equipment move path
- D. verify host to storage connectivity

Answer: C

QUESTION 38

Which software feature must be supported and configured on the NetApp storage controller to configure multipath high availability between the storage controller and disk shelves?

- A. MetroCluster
- B. Software Disk Ownership

- C. Snapshot copies
- D. Single System Image cfmodes

Answer: B

QUESTION 39

Which three does NetApp support for iSCSI with Microsoft Windows solutions? (Choose three.)

- A. VLANs
- B. Jumbo frames
- C. NIC teaming
- D. Microsoft MCS
- E. NIC trunking

Answer: ABD

QUESTION 40

Which topology allows for guaranteed maximum network performance for iSCSI?

- A. isolated VLAN network
- B. MetroWAN network
- C. direct connect
- D. WAN network

Answer: C

QUESTION 41

You are installing a NetApp FAS6040 high availability storage system. Which cfmodes should be set to ensure proper failover in an HP-UX environment?

- A. standby
- B. partner
- C. single system image
- D. dual_fabric

Answer: C

QUESTION 42

You are creating an acceptance test plan and the subject of performance is raised. How should you define what the minimum performance should be?

- A. You should look up the test results for a similar system in previous performance testing and use those numbers.
- B. You should work with the customer to understand their performance expectations and determine the minimum performance they require for the application this system will support.
- C. You should use the published maximum performance specifications for this system.
- D. You should use the published minimum performance specifications for this system.

Answer: B

QUESTION 43

Which type of multipathing does Linux support?

- A. dm_mp
- B. dsm
- C. mpio
- D. mcs

Answer: A

QUESTION 44

You need to gather information from the host systems that will be attached to the NetApp storage system using either FC or iSCSI. This information includes operating system version, patch levels, open bus slots, and cards in bus slots. What other information must you gather from the host systems?

- A. bus type (PCIe and/or PCI-x) and video adapters
- B. memory in system and Ethernet ports (both used and free)
- C. bus type (PCIe and/or PCI-x) and Ethernet ports (both used and free)
- D. bus type (PCIe and/or PCI-x) and Serial ports (both used and free)

Answer: C

QUESTION 45

Which four FC fabric topologies does NetApp support? (Choose four.)

- A. four FC switches with multiple Inter-Switch Links (ISLs) between each pair of switches
- B. ten FC switches per fabric, daisy chained with a single ISL between switches
- C. four FC switches with multiple ISLs between ALL switches
- D. eight FC switches with no more than a single ISL between switches in a cascade topology
- E. dual FC switches with no ISLs
- F. a single FC switch
- G. a switched fabric that has 65537 ports

Answer: ACEF

QUESTION 46

For which two purposes would the use of VLAN's be beneficial? (Choose two.)

- A. to isolate iSCSI traffic from LAN/WAN traffic
- B. to separate LAN from WAN traffic
- C. to isolate management traffic from other IP traffic
- D. to isolate UDP from TCP traffic in the IP network
- E. to isolate SSH traffic from other IP traffic

Answer: AC

QUESTION 47

A company wants to use jumbo frames to improve performance with their iSCSI network. When setting up the Ethernet switches for jumbo frames, which three components need to be configured? (Choose three.)

- A. Ethernet port on Management Console
- B. Ethernet port on RLM

- C. Ethernet port on host system
- D. Ethernet port on storage device
- E. Ethernet port on FC switch
- F. Ethernet switch ports being used

Answer: CDF

QUESTION 48

A company wants to use jumbo frames in their Ethernet network. They should set the packet size to which industry conventional value?

- A. 1200
- B. 1500
- C. 9000
- D. 12000

Answer: C

QUESTION 49

What is the default Ethernet packet size (or MTU - Maximum Transmission Unit) for Ethernet ports on Ethernet switches?

- A. 2112 bytes
- B. 9000 bytes
- C. 1500 bytes
- D. 12000 bytes

Answer: C

QUESTION 50

When setting up a VLAN for administrative security purposes, which four ports are the only important ports to include in the VLAN? (Choose four.)

- A. Storage Controllers Management Ethernet ports
- B. FC Switches Ethernet port
- C. Hosts iSCSI HBA Ethernet port
- D. Ethernet Switches Management port
- E. Storage Controller iSCSI Ethernet Target ports
- F. Hosts NIC Ethernet port

Answer: ABDF

QUESTION 51

You are booting a NetApp storage system for the first time. In which order should the various components be powered on?

- A. any tape backup devices, disk shelves, network switches, NetApp controller heads
- B. NetApp controller heads, disk shelves, any tape backup devices, network switches
- C. NetApp controller heads, disk shelves, network switches, any tape backup devices
- D. network switches, disk shelves, any tape backup devices, NetApp controller heads

Answer: D

QUESTION 52

When booting your NetApp storage system for the first time the system fails to boot. What should you do first to address this problem?

- A. You turn off your storage system and disk shelves, and then turn on the disk shelves. You then check the quick reference card that came with the disk shelf for information about LED responses.
- B. You re-download the boot image to the compact flash card, then reboot the system.
- C. You look for a description of the problem on the LCD and console. You then follow the instructions, if provided, on the LCD and console.
- D. You verify disk shelf compatibility and check the disk shelf IDs to verify that the disk shelf 1 (for DS14 series) must be connected to your system.

Answer: C

QUESTION 53

After completing the configuration of a new Brocade Fibre Channel switch, which command do you use to verify your configuration?

- A. switchshow
- B. show config
- C. configshow
- D. cfgshow

Answer: C

QUESTION 54

Which native GUI switch tool is used to manage Cisco MDS-Series switches and directors?

- A. Operations Manager
- B. Fabric Manager
- C. Web Tools
- D. Data Fabric Manager

Answer: B

QUESTION 55

Which configuration for primary block (FC and iSCSI) data does NetApp best practices recommend? (Choose two.)

- A. single controller single shelf
- B. single controller multiple shelves
- C. dual controller single shelf
- D. dual controller multiple shelves

Answer: CD

QUESTION 56

When running diagnostic tests after an initial installation of a NetApp FAS3000 storage system, which command is used to run a comprehensive set of diagnostic tests on the entire system?

- A. all
- B. comprehensive
- C. full
- D. stress

Answer: A

QUESTION 57

You are about to replace a failed Brocade Fibre Channel switch. Which three steps do you take prior to connecting the switch in the SAN? (Choose three.)

- A. Force the new switch to be the principle switch.
- B. Change the domain ID of the replacement switch to the domain ID of the failed switch.
- C. Clear all zoning configurations on the replacement switch.
- D. Change the core PID format of the replacement switch to the core PID format of the failed switch.
- E. Preload the zoning information from the fabric onto the new switch.

Answer: BCD

QUESTION 58

At which storage object level is deduplication enabled?

- A. Aggregate
- B. Volume
- C. Qtree
- D. LUN

Answer: B

QUESTION 59

Which commands allow you to enable NetApp deduplication and verify space savings?

- A. sis on <vol>, sis start <vol>, df s <vol>
- B. asis on <vol>, asis start <vol>, df s <vol>
- C. sis on <vol>, sis start <vol>, df r <vol>
- D. sis on, sis start, df p <vol>

Answer: A

QUESTION 60

Which row of items should you look up in the IMT (Interoperability Matrix Tool) when designing a NetApp Storage Solution for a customer?

- A. Host OS & patches, FC WWPN, Volume Manager, File System version
- B. Host OS, iSCSI IQN, Volume Manager, Clustering
- C. Host OS & patches, HBA driver, Volume Manager, File System, Clustering
- D. Host OS, HBA driver, Host Memory & CPU Speed, File System, Clustering

Answer: C

QUESTION 61

Which option needs to be set on a volume to guarantee that it cannot be affected by other volumes?

- A. None
- B. Volume
- C. Space Reserved
- D. Reservation Enabled

Answer: B

QUESTION 62

Which option needs to be set on a LUN to guarantee that it cannot be affected by other LUNs in the volume?

- A. Volume Guarantee
- B. Volume Space Reserved
- C. LUN Reservation Disabled
- D. LUN Reservation Enabled

Answer: D

QUESTION 63

When does Fractional Reservation reserve space from the volume?

- A. Volume Creation
- B. LUN Creation
- C. LUN SnapMirror
- D. Volume Snapshot

Answer: D

QUESTION 64

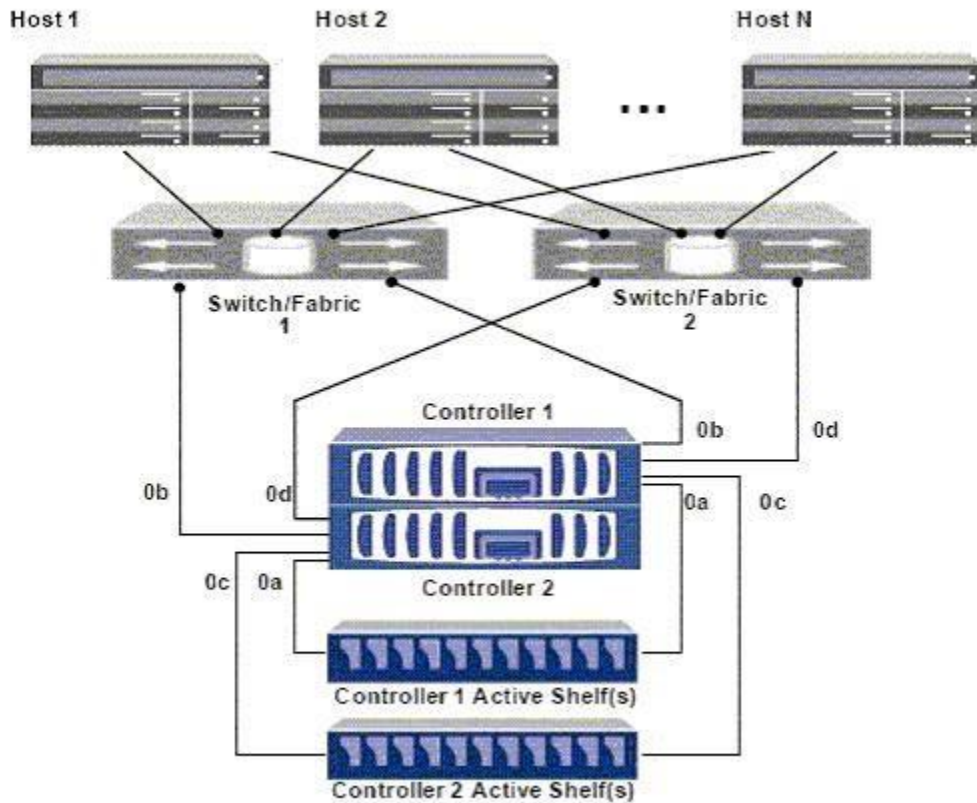
What would you use to share a data LUN among multiple servers where each server has simultaneous write access?

- A. host-based BootBIOS
- B. host-based multipathing
- C. host-based volume manager
- D. host-based clustered file system

Answer: D

QUESTION 65

Referring to the exhibit. In the diagram shown, a portset is created on controller 1 with the command: controller1>portset create -f ntapportset 0b. This portset is bound to the igroup with all the initiators in it. How many paths can host 1 see to a LUN on controller 1?



- A. six paths
- B. four paths
- C. eight paths
- D. two paths

Answer: D

QUESTION 66

What are three relevant perfstat counters to check for unaligned I/O that do not fall on the WAFL boundary? (Choose three.)

- A. wp.partial_write
- B. vvol_read.io_valid
- C. read/write_align_histo.XX
- D. read/write_partial_blocks.XX
- E. xinode content misses

Answer: ACD

QUESTION 67

Referring to the exhibit. The table highlights the space management policy that is defined for a particular flexvol, acmevol. Based on the information provided in the table, which action will the storage controller take when it runs out of space in the volume?

Guarantee	= none
LUN Reservation	= on
Fractional_reserve	= 0%
Snap_reserve	= 0%
Auto_delete	= volume
Auto_grow	= off
Try_first	= snap_delete

- A. It will try deleting Snapshot copies first to reclaim space before trying to grow the volume.
- B. It will grow the volume before deleting Snapshot copies.
- C. It will only try deleting Snapshot copies to reclaim space and will not grow the volume.
- D. It is irrelevant since fractional_reserve is 0%.

Answer: C

QUESTION 68

Which utility on Windows 2003 and Windows 2008 can be used to collect information about firmware and driver versions for an Emulex LP1xxx/LPe1xxx HBA?

- A. EMutil
- B. SANutil
- C. fcp config
- D. SANsurfer
- E. HBAnywhere

Answer: E

QUESTION 69

Which utility on Solaris 10 can be used to collect information about firmware and driver versions for an Emulex LP1xxx/LPe1xxx HBA?

- A. EMutil
- B. SANutil
- C. hbainfo
- D. SANsurfer
- E. HBAnywhere

Answer: E

QUESTION 70

Which utility on Solaris 10 can be used to collect information about firmware and driver versions for a Qlogic QLxxx/QLExxxx HBA?

- A. EMutil

- B. SANutil
- C. cfgadmin
- D. SANsurfer
- E. HBAnywhere

Answer: D

QUESTION 71

An organization currently has a NetApp Fibre Channel block-based solution. With limited budget and resources, they want to create a new disaster recovery site that utilizes a NetApp solution. What would the optimal solution include?

- A. SnapMover and Fibre Channel at the disaster recovery site for all hosts
- B. SnapMirror and iSCSI at the disaster recovery site for all hosts
- C. Fibre Channel at both locations using ftp to replicate storage
- D. MetroCluster and NAS

Answer: B

QUESTION 72

A company has a Fibre Channel environment and wants to connect a new host in a remote data center using 50/125um OM2 multi-mode fiber cable and needs to support 2 Gb speeds. What is the maximum distance of the cable run supported in this situation?

- A. 50/125um OM2 multi-mode fiber cable supports up to 500 meters at 2 Gb.
- B. 50/125um OM2 multi-mode fiber cable supports up to 10000 meters at 2 Gb.
- C. 50/125um OM2 multi-mode fiber cable supports up to 150 meters at 2 Gb.
- D. 50/125um OM2 multi-mode fiber cable supports up to 300 meters at 2 Gb.

Answer: D

QUESTION 73

Zoning by World Wide Port Name (WWPN) is deployed and a host HBA is replaced. Which zone change needs to be made?

- A. No changes are necessary.
- B. The zone configuration should be changed to include the port to which the HBA is connected.
- C. The zone configuration should be changed to include the WWPN of the new HBA; the old WWPN will be automatically dropped.
- D. The zone configuration should be changed to include the WWPN of the new HBA and to remove the WWPN of the old HBA.

Answer: D

QUESTION 74

Which three protocols can be used for communications between a host running SnapDrive for Windows and the NetApp Storage Controllers? (Choose three.)

- A. http:
- B. https:
- C. ftp:
- D. RPC

E. ssh

Answer: ABD

QUESTION 75

Any newly installed system with Data ONTAP 7.3.1 supports which cfmode?

- A. dual_fabric only
- B. single_image
- C. partner
- D. mixed

Answer: B

QUESTION 76

A company has deployed a NetApp dual controller FAS3100 series with iSCSI. Currently, there are five Windows servers and three Novell NetWare servers connected to the IP SAN. The customer wants to connect an HP-UX server to the IP SAN. Which cfmode allows all operating systems to co-exist in the IP SAN?

- A. single_image
- B. standby
- C. cfmode not applicable
- D. dual_fabric

Answer: C

QUESTION 77

Which native GUI switch tool is used to manage Brocade switches and directors?

- A. SAN Manager
- B. Enterprise Fabric Services
- C. Device Manager
- D. Web Tools

Answer: D

QUESTION 78

Which command will display which Brocade switches are connected into a fabric?

- A. fabricshow
- B. switchshow
- C. show fabric
- D. configshow

Answer: A

QUESTION 79

Which command collects detailed diagnostic information from a Brocade FC switch?

- A. supportshow
- B. showsupport

- C. diagshow
- D. showdiag

Answer: A

QUESTION 80

Which command on a NetApp storage controller will display the average latency time on a per LUN basis every five seconds?

- A. sysstat -i 5
- B. sysstat -f 5
- C. fcp stats -i 5
- D. lun stats -i 5

Answer: D

QUESTION 81

Which command on a NetApp storage controller will display the average service time on a FC target port basis every five seconds?

- A. sysstat -i 5
- B. sysstat -f 5
- C. fcp stats -i 5
- D. lun stats -i 5

Answer: C

QUESTION 82

A company has five Windows servers that are dual-attached, four Linux servers that are single-attached, and ten dual-attached Solaris servers. The company wants a highly available architecture. A dual controller FAS3100 series with all onboard FC ports connected to the fabric is being proposed. What is the total number of FC ports and what type of fabric should be deployed from the choices shown?

- A. single fabric with 38 ports total
- B. dual fabrics with 38 ports total
- C. dual fabrics with 42 ports total
- D. single fabric with 42 ports total

Answer: C

QUESTION 83

In Data ONTAP 7.3, what is a portset bound to?

- A. a WWPN
- B. a LUN
- C. an igroup
- D. a volume

Answer: C

QUESTION 84

A dual controller FAS3100 series is connected to a dual fabric with two active target ports per fabric in a single-image cfmode, and uses a single portset. What is the number of paths for ten LUNs on a single host with one connection to each fabric?

- A. 10
- B. 20
- C. 30
- D. 40
- E. 80

Answer: D

QUESTION 85

What are two performance tuning parameters available for Fibre Channel HBAs on a host? (Choose two.)

- A. LUN queue depth
- B. HBA BootBIOS enabled
- C. Fibre Channel speed
- D. LUN device ID

Answer: AC

QUESTION 86

A customer has a four-node SUN cluster configuration. Each node has two, dual-ported HBAs. What is the minimum number of igroups that need to be created to map a LUN to the cluster?

- A. 1
- B. 2
- C. 4
- D. 8

Answer: A

QUESTION 87

You connect a host to a NetApp storage system through an FC switch. The host has its boot volumes on the NetApp storage system. What is mandatory for you to configure?

- A. persistent binding
- B. port zoning
- C. portsets
- D. WWPN zoning

Answer: A

QUESTION 88

A Solaris administrator just noticed that a host has lost connectivity to the company SAN. Which file should the administrator check for SAN connectivity errors?

- A. /opt/errorlog.log
- B. /etc/syslog
- C. /var/adm/messages

D. /etc/sysevent

Answer: C

QUESTION 89

Which NetApp host utility command determines the number of paths per LUN visible to the host?

- A. sanlun path show
- B. sanlun lun show -p
- C. sanlun fcp show adapter -p
- D. sanlun fcp show adapter -c

Answer: B

QUESTION 90

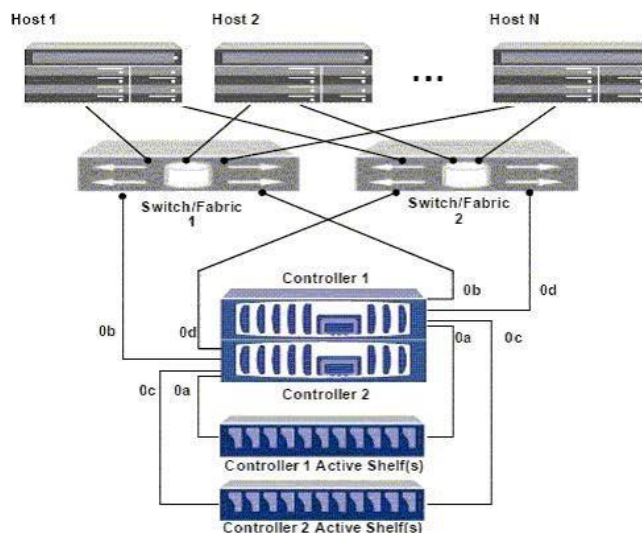
You have a Windows 2003 host using the NetApp ONTAP DSM MPIO environment with a FAS6000 high availability configuration running single image cfmode. When you disconnect a cable from the FC switch to a storage target port, how will the I/O fail over?

- A. I/O will fail over to any port on the original controller but NOT on the partner controller that is part of the associated portset. Choice of path will be controlled by the host's MPIO weighting table.
- B. I/O will fail over to any port on either controller that is part of the associated portset. Choice of path will be controlled by the host's MPIO weighting table.
- C. I/O will fail over to any port on the original controller that is part of the associated portset. Choice of path will be controlled by NetApp storage system igroup settings.
- D. I/O will fail over to any port on either controller that is part of the associated portset. Choice of path will be controlled by NetApp storage system igroup settings.

Answer: B

QUESTION 91

Referring to the exhibit. A Solaris 10 host with VERITAS Storage Foundation 4.1 is FCP attached to a FAS3140 high availability storage system running single image cfmode. Using the diagram shown, which ports will be considered active by VERITAS DMP using the NetApp ASL to a LUN on controller 1 mapped to host 1?



- A. Port 0b on controller 1 only
- B. Port 0d on controller 1 only
- C. Port 0b and 0d on controller 1 only
- D. Ports 0b and 0d on both controller 1 and controller 2

Answer: C

QUESTION 92

Which host-based tool will enable you to stripe a LUN across multiple NetApp controllers?

- A. multipathing software
- B. host-based file system
- C. host-based volume manager
- D. HBA driver

Answer:

Get Complete Version Exam NS0-502 Dumps with VCE and PDF Here



<https://www.passleader.com/ns0-502.html>