

NetApp Certification NS0-171 Exam



- **Vendor: Network Appliance**
- **Exam Code: NS0-171**
- **Exam Name: Cisco and NetApp FlexPod Implementation and Administration**

Get Complete Version Exam NS0-171 Dumps with VCE and PDF Here



<https://www.passleader.com/ns0-171.html>

QUESTION 1

Which statement is true for Fibre Channel QoS System Class?

- A. One can modify no-drop policy, and non FCoE traffic using natively the same class as FCoE will be remarked to 0.
- B. One cannot modify no-drop policy, and non FCoE traffic using natively the same class as FCoE will be remarked to 0.
- C. One can modify no-drop policy, and non FCoE traffic using natively the same class as FCoE will not be remarked.
- D. One cannot modify no-drop policy, and non FCoE traffic using natively the same class as FCoE will not be remarked.

Answer: B

QUESTION 2

Which pool of addresses is created under Servers tab in UCS Manager as part of the Service Profile creation process?

- A. WWPN Pools
- B. MAC Pools
- C. WWNN Pools
- D. UUID Suffix Pools

Answer: D

QUESTION 3

For a 'boot from SAN' configuration, which two features must be enabled? (Choose two.)

- A. FCOE
- B. UDL
- C. NPIV
- D. FC
- E. FCSP
- F. VPC

Answer: AC

QUESTION 4

What aggregate containing the root volume is created during the Clustered Data ONTAP setup process?

- A. 8-bit
- B. 16-bit
- C. 32-bit
- D. 64-bit

Answer: D

QUESTION 5

NetApp recommends that your SSL key length be?

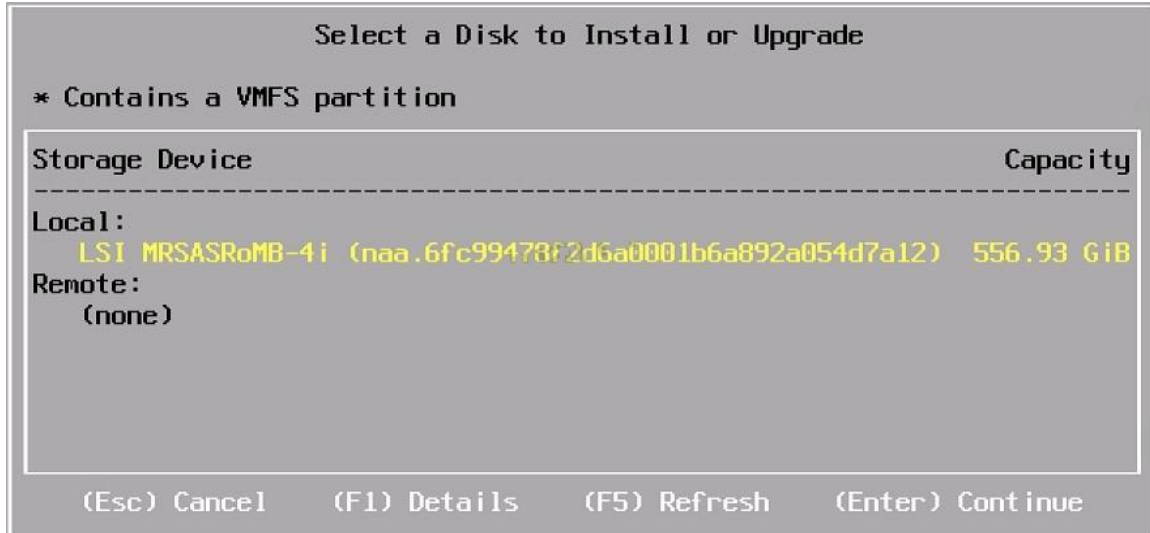
- A. 512
- B. 768

- C. 1024
- D. 9216

Answer: C

QUESTION 6

Refer to the exhibit:



When configuring a Cisco UCS B-Series server to support boot from SAN in a FlexPod deployment, which statement is correct?

- A. This configuration will not support boot from SAN
- B. Boot from SAN is not supported in a FlexPod environment
- C. This given configuration will not support a local ESXi installation
- D. This configuration will support boot from SAN

Answer: A

QUESTION 7

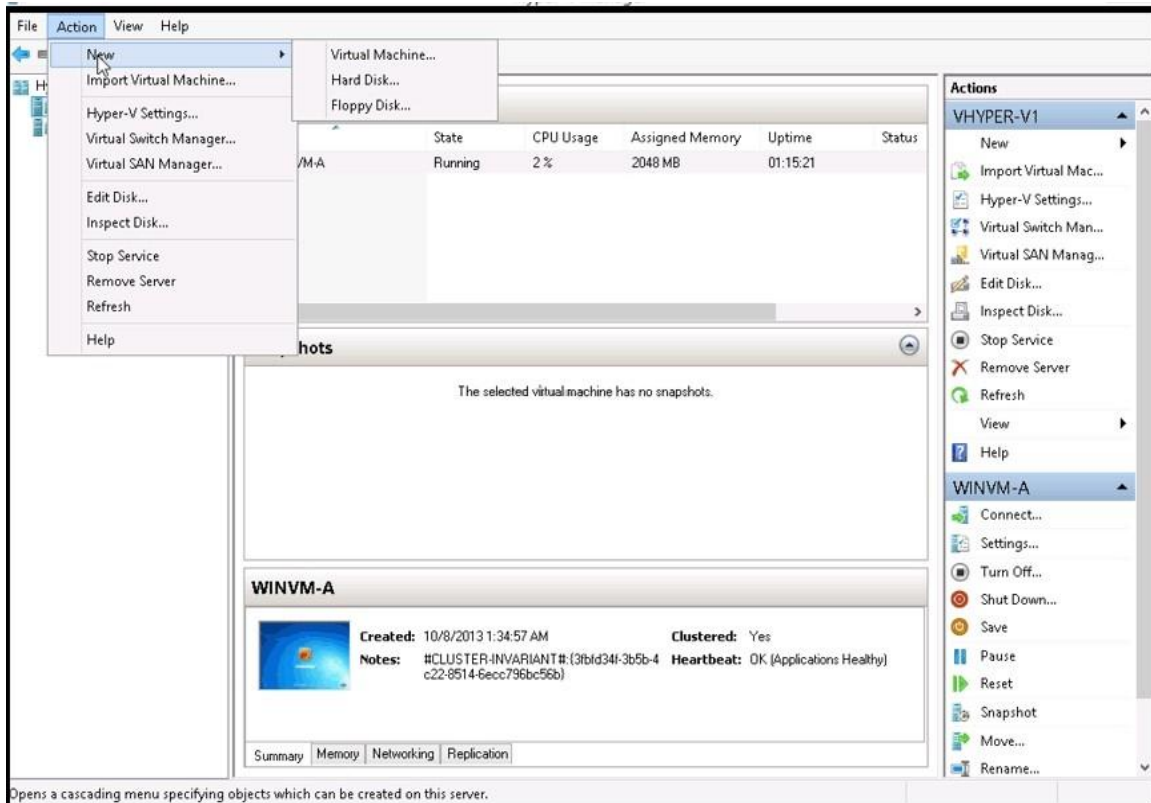
When installing an instance of VMware ESXi on a UCS B-Series server, where should an ISO image be loaded?

- A. From the UCS Manager select KVM Console, Select the Virtual Media tab, and select Add Image
- B. ISO images should not be used
- C. Only physical install disks are supported on UCS B-Series servers
- D. The UCS vCenter Plugin must be used

Answer: A

QUESTION 8

Refer to the exhibit:



What management tool may be used for creating virtual machines?

- A. MMC
- B. System Center Virtual Machine Manager
- C. Hyper-V Manager
- D. System Center Orchestrator

Answer: C

QUESTION 9

When creating a virtual machine in VMware vSphere 5.x, which type of virtual disk should be provisioned if you would like to fully pre-allocate storage with the highest chance of being contiguous?

- A. Thick Provision Lazy Zeroed
- B. Thin Provision
- C. Full Provision
- D. Thick Provision Eager Zeroed

Answer: D

QUESTION 10

Which four items are required in order to create a Gold Master Boot LUN to automate the provisioning of Hyper-V hosts using the built-in LUN cloning capabilities of NetApp storage? (Choose four.)

- A. Create additional virtual fibre channel (vfc) interfaces for the Nexus 5500

- B. Creation of a LUN for the Gold Master Boot LUN
- C. Configuration of the Server OS and hotfix installation
- D. Create a new interface group on the NetApp Cluster
- E. SysPrep of the server operating system
- F. Creation of a service profile and zoning for Gold Master Boot LUN

Answer: BCEF

QUESTION 11

Which two are the expected outputs of network interface show? (Choose two.)

- A. IP addresses of NAS and iSCSI logical interfaces
- B. iSCSI IQNs
- C. Namespace of SAN logical interfaces
- D. System WW node name
- E. WW port names of Fibre Channel and FCoE logical interfaces

Answer: AE

QUESTION 12

Which sends support summary information to NetApp through HTTPS?

- A. AutoSupport
- B. FlexSupport
- C. SnapSupport
- D. TechSupport

Answer: A

QUESTION 13

When configuring a volume to contain a LUN, which administrative tool automatically applies NetApp recommendations?

- A. Data ONTAP command-line interface
- B. OnCommand System Manager
- C. Microsoft SystemCenter
- D. VMware vSphere

Answer: B

QUESTION 14

When trying to configure a Virtual Port Channel (vPC), what might be a cause of the following error when trying to create the vPC domain?

```
Nexus-5548-B(config)# vpc domain 10
^% Invalid command at '^' marker.Nexus-5548-B(config)#
```

- A. Have not yet turned on the vpc feature using the `feature vpc` command
- B. The vPC links have to be configured before the vPC domain can be added
- C. The vPC domain has already been configured
- D. vPC domain cannot be configured at the global prompt

Answer: A

QUESTION 15

Which tool can be used to validate hardware installation in a FlexPod solution?

- A. NetApp OnCommand Insight
- B. NetApp Config Advisor
- C. NetApp OnCommand Unified Manager
- D. Cisco UCS Central
- E. Cisco UCS Director

Answer: B

QUESTION 16

Which policy detail should be set if you want a server to be exempt from all power capping?

- A. Create a Power Control Policy and set Power Capping to No Cap.
- B. Create a Power Control Policy select cap and set the priority to 1.
- C. Create a Power Group with the appropriate chassis and set the Group Budget Power Cap (W) to 0.
- D. The UCS Power Cap feature should not be utilized in a FlexPod environment.

Answer: A

QUESTION 17

Which two are correct about VSAN configuration within UCS Manager? (Choose two.)

- A. VSAN ID and FCoE VLAN ID have to match
- B. VSAN can be configured as fabric interconnect specific
- C. We can delete VSAN 1
- D. VSAN IDs 3840-4079 are not available regardless of the Fabric Interconnect mode
- E. VSAN can be configured as a global parameter
- F. In addition to SAN tab, VSANs can be configured under UCSM Server tab as well

Answer: BE

QUESTION 18

Which two are true about Fabric Interconnect L1 and L2 ports in cluster mode? (Choose two.)

- A. Fabric Interconnects connected via L1/L2 have to be the same model except during the upgrade
- B. Ports are primarily used for management traffic, but can be used for data traffic as well
- C. Fabric Interconnect ports L1 and L2 are 10 Gb links
- D. Ports can only run as a port channel
- E. Ports can only run as individual links
- F. Ports can run as a port channel or as individual links

Answer: AD

QUESTION 19

There are 2 chassis tied to a pair of Fabric Interconnects. First chassis, chassis-1, has 1 link between single IOM and Fabric Module. Second chassis, chassis-4, has 4 links between single IOM and Fabric Module. Chassis discovery policy is set for 2 links. Which statement is true?

- A. Both chassis will be added to UCS Domain utilizing all links. No additional steps needed.
- B. Both chassis will be added to UCS Domain utilizing all links only after performing chassis acknowledgment.
- C. Chassis-1 will not be added to UCS Domain. Chassis-4 will be added to UCS domain with all 4 links operating and no additional steps needed.
- D. Chassis-1 will not be added to UCS Domain. Chassis-4 will be added to UCS domain with all 4 links operating after chassis acknowledgement.

Answer: D

QUESTION 20

With Clustered Data ONTAP, which three protocols are supported for host boot in a UCS stateless computing environment in the FlexPod configuration? (Choose three.)

- A. CIFS
- B. FC
- C. FCIP
- D. FCoE
- E. iFCP
- F. iSCSI
- G. NFS

Answer: BDF

QUESTION 21

Which three are types of Storage Virtual Machines? (Choose three.)

- A. data
- B. cluster
- C. flex
- D. intercluster
- E. node
- F. vFiler

Answer: ABE

QUESTION 22

Which aggregates should be disabled for data aggregates?

- A. Snapshot copies
- B. SnapMirror copies
- C. FCP
- D. iSCSI

Answer: A

QUESTION 23

Which three are characteristics of a NAS data LIF? (Choose three.)

- A. It can be associated with a Fibre Channel port.
- B. It can be associated with a WWPN.
- C. It can be associated with an Ethernet port or VLAN interface.

- D. It can be associated with an interface group (ifgrp).
- E. It can be associated with an IP address.
- F. It is associated with the administrative Vserver.
- G. It is associated with the management LIF.

Answer: CDE

QUESTION 24

Which two are characteristics of a Fibre Channel SAN data LIF? (Choose two.)

- A. It can be associated with a Fibre Channel port.
- B. It can be associated with a WWPN.
- C. It can be associated with an Ethernet port or VLAN interface.
- D. It can be associated with an interface group (ifgrp).
- E. It can be associated with an IP address.
- F. It is associated with the administrative Vserver.
- G. It is associated with the management LIF.

Answer: AB

QUESTION 25

Which two LIFs are able to failover or migrate to other nodes in the cluster? (Choose two.)

- A. cluster LIF
- B. data LIF of protocol CIFS
- C. data LIF of protocol FCoE
- D. data LIF of protocol iSCSI
- E. data LIF of protocol NFS
- F. intercluster LIF
- G. node management LIF

Answer: BE

QUESTION 26

Which server role is required to support running virtual machines on a Microsoft based hypervisor?

- A. Web Server
- B. Remote Access
- C. Application Server
- D. Hyper-V

Answer: D

QUESTION 27

Which service may be used to manage users and groups in a vSphere environment?

- A. Microsoft Active Directory (AD)
- B. Network Time Protocol (NTP)
- C. VMware vSphere Storage APIs for Array Integration (VAAI)
- D. Domain Name System (DNS)

Answer: A

QUESTION 28

Which backup type stores Service Profile information as a small editable file?

- A. Full Backup
- B. All Configurations
- C. Logical Configuration
- D. System Configuration

Answer: C

QUESTION 29

Which endpoint's firmware can be directly upgraded (without the use of a Service Profile) using UCS Manager?

- A. BIOS
- B. RAID Controller
- C. CIMC
- D. HBA

Answer: C

QUESTION 30

When creating local user, which two are valid user names? (Choose two.)

- A. daemon
- B. somebody
- C. root
- D. 1greatuser
- E. 12345
- F. best_user

Answer: BF

QUESTION 31

How many VEMs can one server have?

- A. 4
- B. unlimited
- C. 1
- D. 2

Answer: C

QUESTION 32

Your primary VSM needs to be edited, rebooted, or migrated. You need to initiate a manual switchover to your standby VSM. What command will allow this to occur?

- A. vsm switchover
- B. System switchover

- C. Standby activate
- D. System standby

Answer: B

QUESTION 33

To install your VEM, what is the extension of the VEM file name you'll be looking for to complete this install?

- A. .zip
- B. .vem
- C. .vib
- D. .vsm

Answer: C

QUESTION 34

How do the Fabric Interconnect ports connecting to the 2232PP FEX have to be configured?

- A. In UCS Manager, the FI ports connecting to the FEX must be set as type `Server'
- B. In UCS Manager, the FI ports connecting to the FEX must be set as type `FEX'
- C. In UCS Manager, the FI ports connecting to the FEX must be set as type `Uplink'
- D. In UCS Manager, the FI ports connecting to the FEX must be set as type `Auto'
- E. In UCS Manager, the FI ports connecting to the FEX must be set as type `Network'

Answer: A

QUESTION 35

When connecting the Nexus 1110-X to the Nexus switch, what Spanning Tree port type is used?

- A. Edge
- B. Trunk
- C. Network
- D. Edge trunk
- E. Normal

Answer: D

QUESTION 36

How should the speed be configured on the Nexus 5548 port connecting to the Nexus 1100-X?

- A. It should not be configured ?the 5548 will auto detect the correct speed
- B. Speed 10
- C. Speed 1000
- D. Speed 1000000
- E. Speed 1G

Answer: C

QUESTION 37

What management solution can provision all three components of a FlexPod (NetApp storage,

Cisco UCS compute and Cisco Nexus network)?

- A. Cisco UCS Central
- B. Cisco FlexPod Manager
- C. NetApp OnCommand Insight
- D. Cisco UCS Director
- E. NetApp FlexPod Manager

Answer: D

QUESTION 38

How many ACTIVE SPAN sessions exist on a Fabric Interconnect?

- A. 1
- B. 2
- C. 4
- D. 8
- E. 16

Answer: B

QUESTION 39

Which two are two possible features of the `Call Home' feature in UCS Manager?

- A. Generates a text message to configured cell phone numbers
- B. Generates a syslog event
- C. Ability to proactively open a case with the Cisco TAC with the `Smart Call Home' feature
- D. Generates emails to predefined email addresses when a problem is detected
- E. Allows UCS to proactively pull down new software updates from Cisco

Answer: CD

QUESTION 40

Given the following switch output, where would you expect see notification level messages?

```
N5K-1# show logging info.
```

```
Logging console: enabled (Severity: error)
```

```
Logging monitor: enabled (Severity: informational)
```

```
Logging linecard: enabled (Severity: emergency)
```

```
Logging fex: enabled (Severity: notifications)
```

```
Logging time stamp: seconds
```

```
Logging server: disabled
```

```
Logging logfile: enabled
```

- A. On the console
- B. On the terminal sessions
- C. On the linecard
- D. Notification messages will not be seen anywhere

Answer: B

QUESTION 41

Where are log files located on a NetApp node?

- A. /mroot/etc/crash/
- B. /log/core/
- C. /etc/log/crash
- D. /etc/mlog/
- E. /mroot/etc/log/mlog/

Answer:

Get Complete Version Exam NS0-171 Dumps with VCE and PDF Here



<https://www.passleader.com/ns0-171.html>